

RESOLUTION NO. 99-80

A RESOLUTION SETTING THE TIME AND PLACE FOR PUBLIC HEARING ON THE CLOSING, VACATING, AND ABANDONING OF THOSE CERTAIN RIGHTS OF WAYS OR THE RENOUNCING AND DISCLAIMING OF ANY RIGHT OR INTEREST OF SAID NASSAU COUNTY, FLORIDA, AND THE PUBLIC IN SAID RIGHTS OF WAY OR ALLEYS.

WHEREAS, Lewis E. Stokes has petitioned the Board of County Commissioners of Nassau County, Florida, to vacate, abandon, discontinue and close, and to renounce and disclaim the right and interest of Nassau County, Florida, and the public in and to those certain rights of way or alleys described as follows:

ATTACHED AS EXHIBIT "A"

WHEREAS, Section 336.09, Florida Statutes, authorizes this Board to close, vacate and abandon streets, roads and alleys and to renounce and disclaim the right and interest of Nassau County, Florida, and of the public in and to lands delineated on any recorded map or plat as a street, alley, road, or highway outside of the corporate limits of any municipality after given notice of and holding a public hearing to determine whether such action should be taken.

NOW, THEREFORE, BE IT RESOLVED by the Board of County Commissioners of Nassau County, Florida, in a meeting duly assembled on the 14th day of June, 1999, that a public hearing will be held on said petition at the Yulee County Building, 1336 Pages Dairy Road, Yulee, Florida, on the 19th day of July, 1999 at 7:00 p.m.

BE IT FURTHER RESOLVED that notice of said meeting will be published in the Nassau County Record, a newspaper of general circulation in Nassau County, Florida at least two weeks prior to the date of said hearing, said notice to be in substantially the form as indicated on the attached.

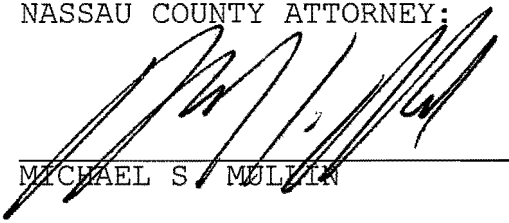
ATTEST:

BOARD OF COUNTY COMMISSIONERS  
OF NASSAU COUNTY, FLORIDA

  
\_\_\_\_\_  
J. M. "CHIP" OXLEY, JR.  
EX-OFFICIO CLERK

  
\_\_\_\_\_  
J. H. COOPER  
CHAIRMAN

APPROVED AS TO FORM BY THE  
NASSAU COUNTY ATTORNEY:

A handwritten signature in black ink, appearing to read "Michael S. Molin", written over a horizontal line.

MICHAEL S. MOLIN

NOTICE OF HEARING FOR THE CLOSING  
OF RIGHTS OF WAY, ROADWAYS, OR ALLEYS

TO WHOM IT MAY CONCERN:

YOU WILL TAKE NOTE that the Board of County Commissioners of Nassau County, Florida, upon the petition of Lewis E. Stokes, will at 7:00 P.M. on the 19th day of July, 1999, at the Yulee County Building, 1336 Pages Dairy Road, Yulee, Florida, consider and determine whether or not the said Nassau County, Florida, will vacate, abandon, discontinue and close, and will renounce and disclaim any right of Nassau County, Florida, and the public in and to any land or interest therein delineated upon the roads and alleys which are more particularly described as follows:

SEE ATTACHMENT "A"

The public is invited to be present and be heard. If a person wishes to appeal any decision made by the Board, agency, or commission, with respect to any matter considered at such meeting or hearing, he or she will need a record of the proceedings, and that, for such purpose, may need to ensure that a verbatim record of the proceedings is made, which record includes the testimony and evidence upon which the appeal is to be based.

Individuals with disabilities requiring accommodations in order to participate in this proceeding should contact the office of the Ex-Officio Clerk at (904) 321-5703 or Florida Relay Service at 1-800-955-8771 at least twenty four hours in advance to request such accommodation.

BOARD OF COUNTY COMMISSIONERS  
NASSAU COUNTY, FLORIDA

BY: /s/ J. H. Cooper  
Its: Chairman

ATTEST:

/s/ J. M. "Chip" Oxley, Jr.  
Its: Ex-Officio Clerk

# Olde Isle Surveying & Mapping Company

Michael A. Manzie, P.L.S. • Stephen W. Hoffman, P.S.M. • Jeanette C. Hoffman, Office Manager

**SKETCH OF:**

Exhibit "A"

**LEGAL DESCRIPTION:** (RIGHT-OF-WAY ABANDONMENT)

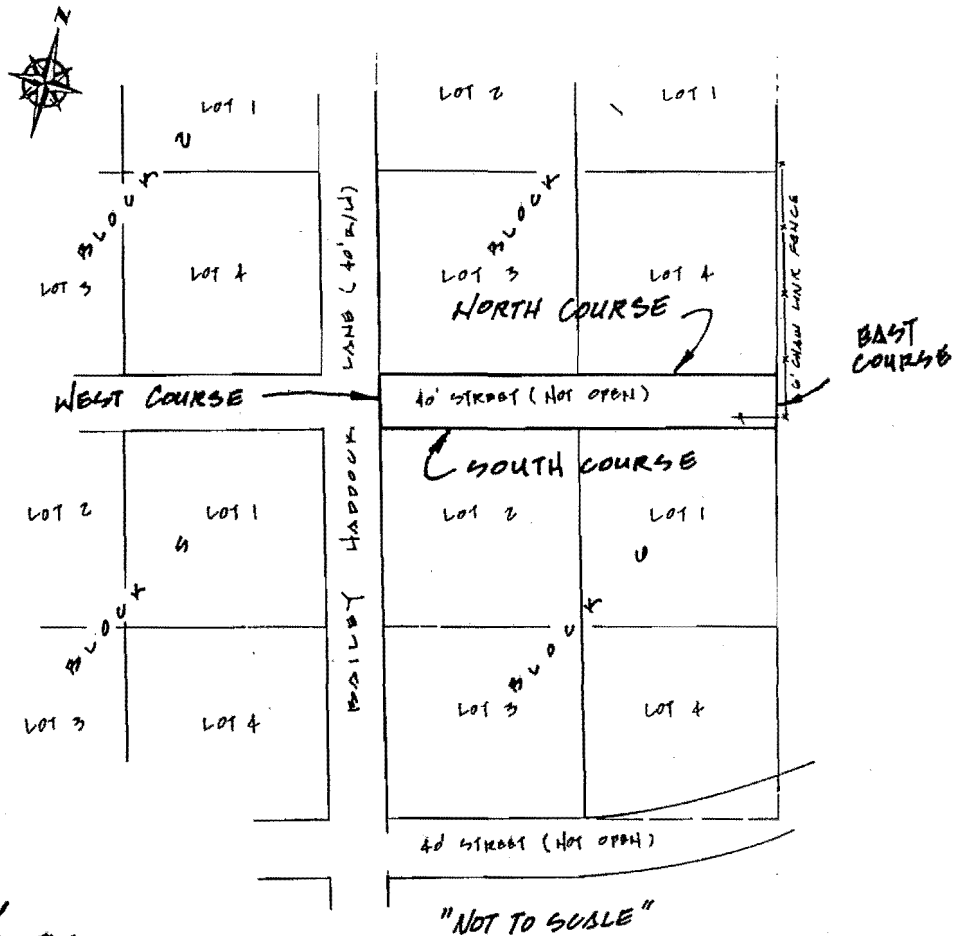
THAT CERTAIN PLATTED ROAD RIGHT-OF-WAY BEING 40 FEET IN WIDTH LYING WITHIN THE PLAT OF "TOWN OF KINGS FERRY", ACCORDING TO THE PLAT THEREOF, RECORDED IN PLAT BOOK 0, PAGE 64, OF THE PUBLIC RECORDS OF NASSAU COUNTY, FLORIDA, BEING BOUNDED AS FOLLOWS:

**ON THE NORTH:** BY THE SOUTH LINE OF BLOCK 1, AS SHOWN ON SAID PLAT OF "TOWN OF KINGS FERRY".

**ON THE EAST:** BY THE EAST LINE OF SAID PLAT OF "TOWN OF KINGS FERRY".

**ON THE SOUTH:** BY THE NORTH LINE OF BLOCK 6, AS SHOWN ON SAID PLAT OF "TOWN OF KINGS FERRY".

**ON THE WEST:** BY A LINE RUNNING FROM THE NORTHWEST CORNER OF BLOCK 6, ACCORDING TO SAID PLAT OF "TOWN OF KINGS FERRY" TO THE SOUTHWEST CORNER OF BLOCK 1, ACCORDING TO SAID PLAT OF "TOWN OF KINGS FERRY".



*Stephen W. Hoffman*  
 Stephen W. Hoffman  
 PLS No. 5774